

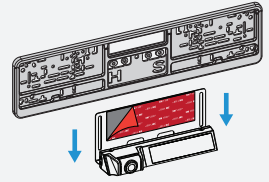
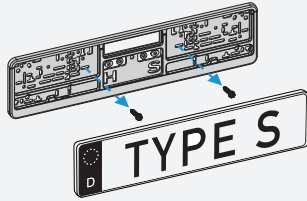
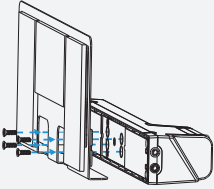
TRAVCA BACKUP SOLAR



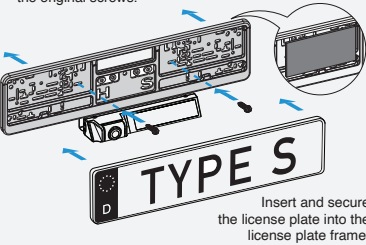
QUICK START GUIDE

Backup Camera Installation Option A: Mount with 3M VHB™ Double-sided Tape onto License Plate Frame

- 1 Screw the camera onto the installation plate using the silver tapping screws (included).
- 2 Remove your license plate and license plate frame.
- 3 Peel off the backings from the red 3M VHB™ double-sided tape and attach it to the cleaned license plate frame.



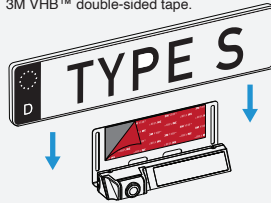
- 4 Mount the license plate frame to your vehicle using the original screws.



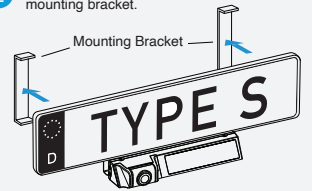
Note: Attach additional white 3M™ tapes to the back of the license plate frame as illustrated to level the space between the installation plate.

Option B: Mount with 3M VHB™ Double-sided Tape and Mounting Bracket

- 1 Follow Option A Step 1. Remove your rear license plate, clean it and attach it to the installation plate using the red 3M VHB™ double-sided tape.
- 2 Mount the license plate onto the original mounting bracket.



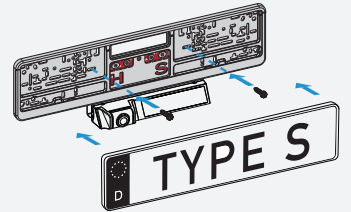
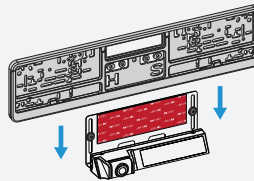
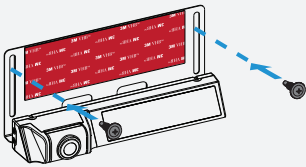
Note: The license plate should not be covered by the camera.



Note: The pre-installed white 3M™ tapes are used as spacers to protect vehicle surfaces against abrasion. It is not necessary to peel off the backings from the 3M™ tapes.

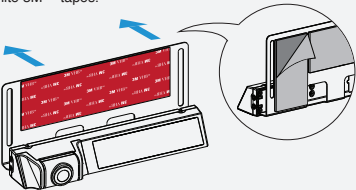
Option C - Mount with Tapping Screws (for plastic components like bumper only)

- 1 Follow Option A Step 1 and 2. Position the installation plate on the ideal mounting location on the bumper, where the license plate will not be covered by the camera. Line up and screw through the installation plate slots using the black tapping screws (included).
- 2 Mount the license plate frame to your vehicle using the original screws. Insert and secure the license plate into the license plate frame.

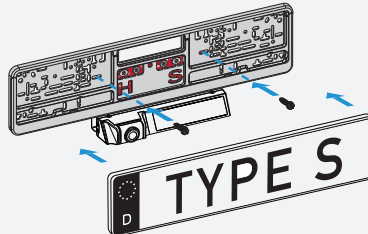


Option D - Mount with 3M™ Tapes

- 1 Follow Option A Step 1 and 2. Position the installation plate on the ideal mounting location on the bumper. Attach the installation plate to your vehicle using the white 3M™ tapes.
- 2 Mount the license plate frame to your vehicle using the original screws. Insert and secure the license plate into the license plate frame.

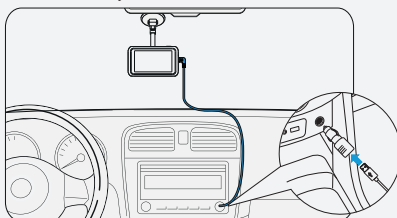
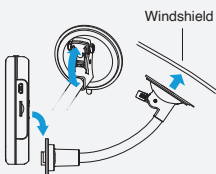


Note: The license plate should not be covered by the camera.



Monitor Installation

- 1 Attach the mount onto the cleaned windshield. Utilize the lever to secure the mount in place. Attach the monitor to the mount.
- 2 Connect the monitor to your 12/24V outlet (cigarette lighter) using the power cable and USB-A Adapter included. We recommend having the cable go through the passenger side, so it doesn't get into the driver's way.



For more information about installing and operation please visit www.typeSauto.de.

©2023 TYPE S. All rights reserved.

TOURING ITEMS
TYPES
Horizon Brands Europe GmbH
Mergenthalerallee 77, 65760 Eschborn
Deutschland
www.typeSauto.de

